

Comparative Oriental Manuscript Studies
Launching Conference
Hamburg, 2 December 2009

Review and updating of the catalogue of the
Syriac manuscripts
of the Biblioteca Medicea Laurenziana of Florence

Margherita Farina

Dipartimento di Scienze Storiche del Mondo Antico



Presentation of the project

PRIN project

funded by Italian **MIUR** and the **University of Pisa**

Project leader

- Prof. Dr. P.G. Borbone (University of Pisa).

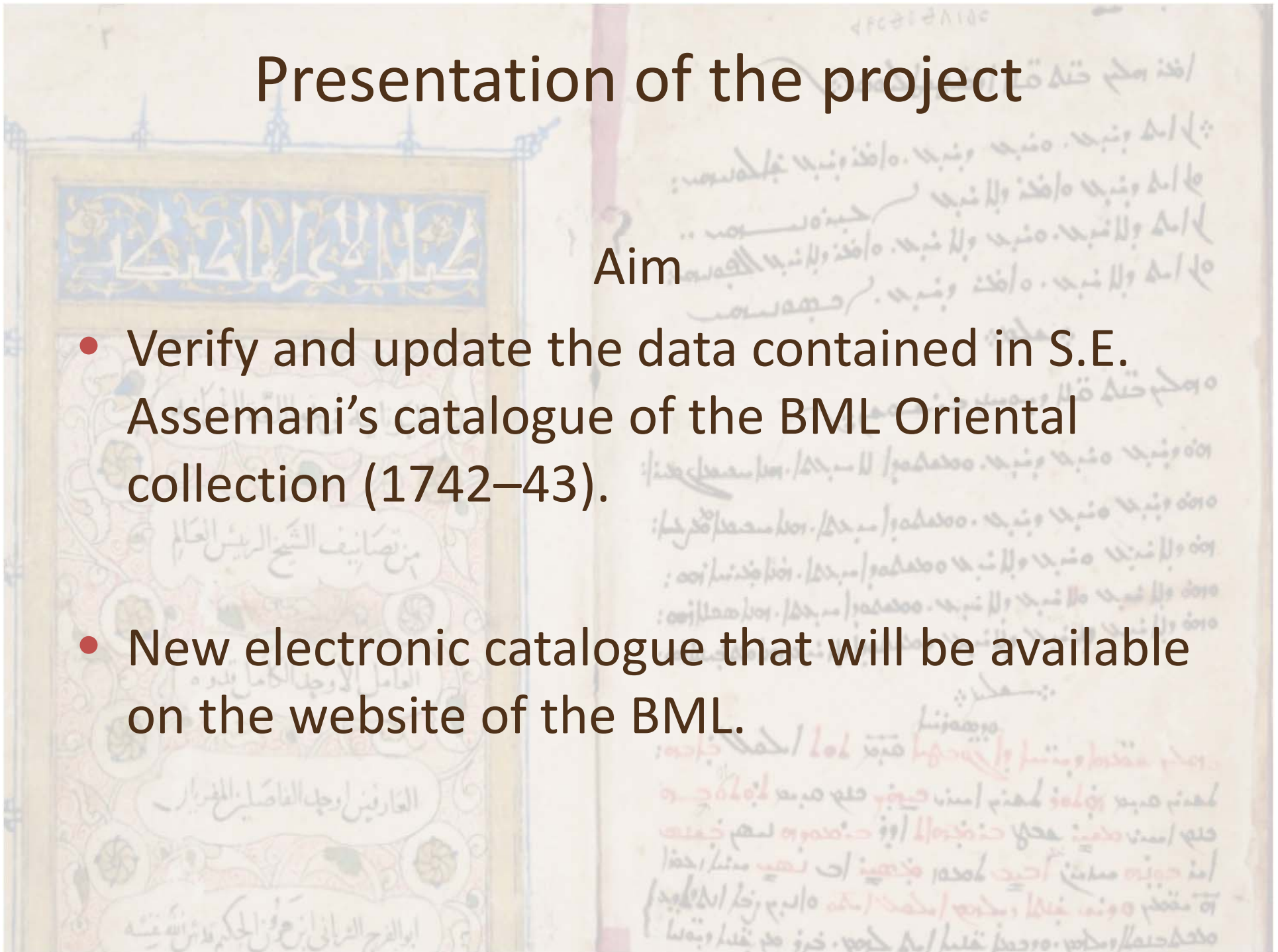
Other members

- Dr. I.G. Rao BML (keeper of the Manuscript section of the BML);
- Dr. M. Farina (research assistant - University of Pisa);
- E. Braidà (doctoral student University of Pisa).
- S. Pratelli (doctoral student University of Pisa).

Presentation of the project

Aim

- Verify and update the data contained in S.E. Assemani's catalogue of the BML Oriental collection (1742–43).
- New electronic catalogue that will be available on the website of the BML.



BML – Oriental collection

- About 540 mss. (Arabic, Syriac, Armenian, Coptic, Turkish, Persian, Hebrew)
- About 70 Syriac mss. (Syriac / garshuni).
- Levantine area, Iraqi area, Rome.
- Dating range: 9a1 Peshitta – 17th cent.

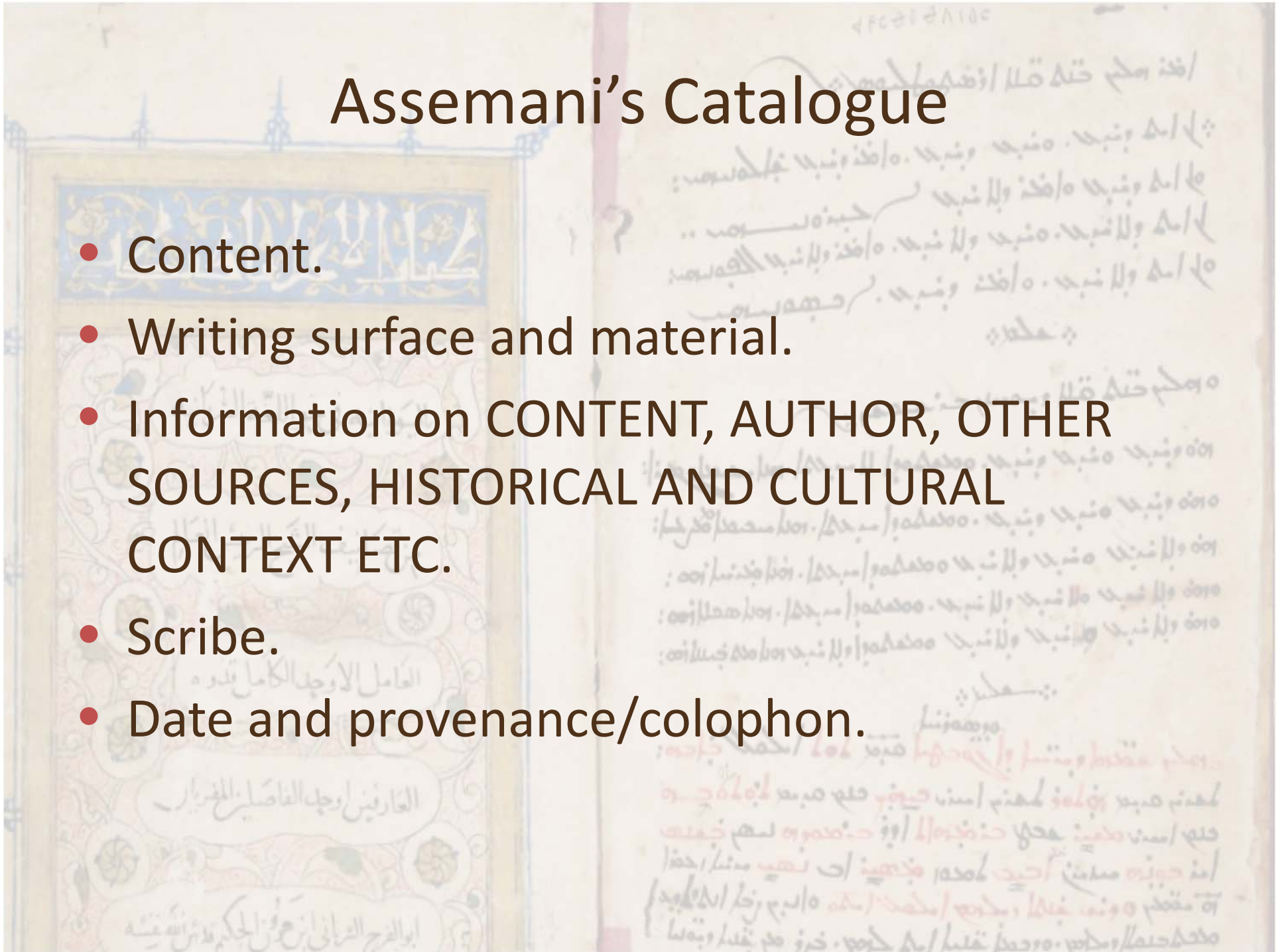


BML – Oriental collection

- *Stamperia Orientale Medicea*, founded in Rome in 1584 by Ferdinando dei Medici.
- Gathering mss. in Mediterranean and Middle East.
- Creating type-sets for oriental languages, in order to print a polyglotta.
- G.B. Raimondi, Vecchietti brs., Ignatius Na'matallah patriarch of Antioch.

Assemani's Catalogue

- Content.
- Writing surface and material.
- Information on CONTENT, AUTHOR, OTHER SOURCES, HISTORICAL AND CULTURAL CONTEXT ETC.
- Scribe.
- Date and provenance/colophon.



Assemani's Catalogue

Main problems

- Information is not complete (missing texts)
- (com)position of the codex has changed
- Information is not correct (dating, content, authorship)

The Appendix

MANUSCRIPT	CAT. ENTRY	APPENDIX
oriental writing	Latin translation	original text

The text in the Appendix does not correspond to the ms., but is a retroversion from the Latin.

Prototype of a catalogue entry

- Title
- Content
- Preservation
- Writing surface
- Quires and numbering
- Dimensions of the page and of the written surface
- Binding
- Languages and scripts (incl. palaeographical information)
- Decorations
- Annotations
- Incipit and explicit of sections and text of the colophon
- Bibliography on the manuscript and on the text

